

# Industry Certifications and Credentials for Vessel Operations Careers

**Basic**  
*(can get in high school)*

- American Red Cross CPR Certification
- Forklift Operator Certification
- Merchant Mariner Medical Certificate
- OSHA 10 Hour General Safety Certification
- TWIC (Transportation Workers Identification Card)



# Industry Certifications and Credentials for Vessel Operations Careers

## **NATIONAL** **ENDORSEMENTS FOR** **DECK OFFICERS**

More Advanced  
*(requires some post-secondary level courses or degrees/relevant work experience and sea time/passing exam score)*

### All of these endorsements are for Deck Officers (Licensed)

- National Master (Unlimited OC or NC, 00/1600 OC or NC, 200 OC, 200 NC, 100 NC, Limited 100/Limited OUPV, Unlimited GL and Inland, 500/1600 GL and Inland, 200 GL and Inland, 100 GL and Inland, UFIV, Grandfathering Master and Mate Pilot of Towing, Towing OC, NC, FL-IN, WR, OSV Less than or more than 1600GRT/3000GT, OSV Restricted to Lifeboats)
- National Mate (Chef Mate Unlimited OC or NC, 2<sup>nd</sup> Unlimited OC or NC, 3<sup>rd</sup> Unlimited OC or NC, 500/1600NC, 200OC, 200NC, Unlimited GL and Inland, 500/1600 GL and Inland, 200 GL and Inland, UFIV, Pilot of Towing – OC, NC, GL-IN, WR, Apprentice Mate (Steersman) – OC, NC, GL-IN, WR; OSV Less than or More than 1600GRT/3000GT, OSV, OSV Restricted to Lifeboats)
- National Limitedtowing Vessels upon Great Lakes-Inland & Western Rivers
- National OUPV less than 100 GRT
- National Ballast Control Operator (BCO)
- National First Class Pilot
- National Staff Officers
- National HSC Orig/Renewal/Extension of Route
- National OIM (Active Ballast, Bottom Bearing on Location, Bottom Bearing Underway, Passive Ballast, Surface Units on Location/Underway, Unrestricted)
- National Barge Supervisor

# Industry Certifications and Credentials for Vessel Operations Careers

## STCW ENDORSEMENTS FOR DECK OFFICERS

More Advanced  
(requires some post-secondary level courses or degrees/relevant work experience and sea time/passing exam score)

### All of these endorsements are for Deck Officers (Licensed)

- GMDSS Radio Operator
- Advanced Firefighting
- Master (3000 GT or more, 500-3000 GT, Less than 500 GT OC, Less than 500 GT Limited to Near Coastal Waters, OSV 3000 GT or more)
- Chief Mate (3000 GT or more, 500-3000 GT, OSV 500-3000 GT, 3000 GT or more)
- OICNW (500 GT or more, less than 500 GT, less than 500 GT NC)
- Vessel Security Officers
- PSC, PSC Limited, Fast Rescue Boats 1
- Medical First Aid Provider/PIC of Medical Care
- Vessel Personnel with Designated Security Duties Security Awareness



# Industry Certifications and Credentials for Vessel Operations Careers

## **NATIONAL RATINGS** **ENDORSEMENTS FOR** **UNLICENSED DECK** **OCCUPATIONS**

More Advanced  
*(requires some post-secondary  
level courses or degrees/relevant  
work experience and sea  
time/passing exam score)*



### All of these endorsements are for Deck Ratings (Unlicensed)

- National Radio Officer
- National Able Seaman
- National Lifeboatman and Lifeboatman-Limited
- National Tankerman
- Students Observer, Apprentice Mate or Apprentice Engineer
- Tankerman PIC (DL) Restricted to Fuel Transfer on Towing Vessels

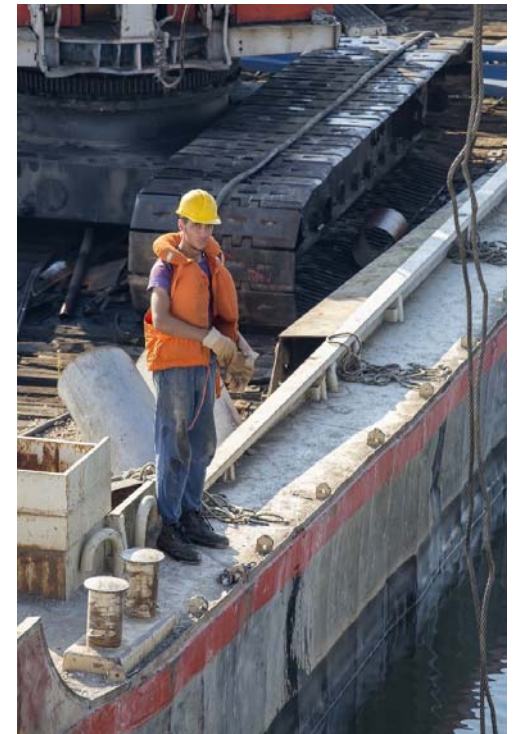
# Industry Certifications and Credentials for Vessel Operations Careers

## **STCW RATINGS** **ENDORSEMENTS FOR** **UNLICENSED DECK** **OCCUPATIONS**

More Advanced  
*(requires some post-secondary  
level courses or degrees/relevant  
work experience and sea  
time/passing exam score)*

### All of these endorsements are for STCW Ratings (Unlicensed) Deck Occupations

- Advanced Firefighting
- Vessel Security Officer (VSO)
- Able Seafarer-Deck
- RFPNW
- PSC, PSC Limited, Fast Rescue Boats 1
- GMDSS At-Sea maintainer
- Vessel Personnel with Designated Security Duties/Security Awareness
- Advanced Oil Tanker Cargo Operations
- Advanced Chemical Tanker Cargo Operations
- Advanced Liquefied Gas Tanker Cargo Operations
- Basic Oil and Chemical Tanker Cargo Operations
- Basic Liquefied Gas Tanker Cargo Operations



# Industry Certifications and Credentials for Vessel Operations Careers

## **NATIONAL** **ENDORSEMENTS FOR** **ENGINE OFFICERS**

**More Advanced**  
*(requires some post-secondary level courses or degrees/relevant work experience and sea time/passing exam score)*

### All of these endorsements are for Engine Department Officers (Licensed)

- National Engineering Propulsion Cross-Over Steam/Motor/GT
- Chief Engineer Steam/Motor/GT
- Assistant Engineer Steam/Motor/GT (1<sup>st</sup>, 2<sup>nd</sup>, 3<sup>rd</sup>)
- Chief Engineer (Limited) Steam/Motor/GT
- Assistant Engineer (Limited) Steam/Motor/GT
- Designated Duty Engineer Steam/Motor/GT
- Chief Engineer/Assistant Engineer UFIV
- Chief Engineer of MODU
- Assistant Engineer of MODU
- Chief Engineer OSV
- Assistant Engineer OSV
- HSC Original/Renewal/Extension of Route
- Students Observer, Apprentice Mate or Apprentice Engineer



# Industry Certifications and Credentials for Vessel Operations Careers

## STCW ENDORSEMENTS FOR ENGINE OFFICERS

**More Advanced**  
*(requires some post-secondary level courses or degrees/relevant work experience and sea time/passing exam score)*

### All of these endorsements are for Engine Department Officers (Licensed)

- Advanced Firefighting STCW
- Chief Engineer (3000kW/4000 HP or more, between 750 kW/1000 HP and 3000 kW/4000 HP)
- Second Engineer Officer - 1<sup>st</sup> AE (3000 kW/4000 HP or more, between 750 kW/1000 HP and 3000 kW/4000 HP)
- OICEW or DDE 750 kW/1000 HP or more
- Electro-Technical Officer 750 kW/1000 HP or more operational level
- Vessel Security Officer (VSO)
- PSC, PSC Limited, Fast Rescue Boats 1
- Medical First Aid Provider/PIC of Medical Care 1
- Vessel Personnel with Designated Security Duties/Security Awareness
- Removing Limitation STCW Designated Duty Engineer – Chief Engineer Regulation III/2 & III/3
- OSV Chief Engineer 3000 kW/4000 HP or more
- OICEW (OSV)

# Industry Certifications and Credentials for Vessel Operations Careers

## **NATIONAL & STCW RATINGS ENDORSEMENTS FOR UNLICENSED DECK OCCUPATIONS**

**More Advanced**  
*(requires some post-secondary level courses or degrees/relevant work experience and sea time/passing exam score)*

### All of these National endorsements are for Unlicensed Engine Department Occupations

- National QMED
- Students Observer, Apprentice Mate or Apprentice Engineer

### All of these STCW ratings endorsements are for Unlicensed Engine Department Occupations

- Advanced Firefighting
- Vessel Security Officer (VSO)
- Able Seafarer – Engine
- RFPEW
- Electro-Technical Rating 750 kW/1000 HP or more
- PSC, PSC Limited, Fast Rescue Boats 1
- GMDSS At-Sea Mariner
- Vessel Personnel with Designated Security Duties/Security Awareness
- OSV Chief Engineer 3000 kW/4000 HP or more Management Level
- OICEW (OSV)